

## **SOP: Rat Blood Collection, Intracardiac**

These SOPs were developed by the Office of the University Veterinarian and reviewed by Virginia Tech IACUC to provide a reference and guidance to investigators during protocol preparation and IACUC reviewers during protocol review. They can be used as referenced descriptions for procedures on IACUC protocols. However, it is the sole responsibility of the Principal Investigator to ensure that the referenced SOPs adequately cover and accurately represent procedures to be undertaken in any research project. Any modification to procedure as described in the SOP must be outlined in each IACUC protocol application (e.g. if the Principal Investigator plans to use a needle size that is not referenced in the SOP, simply state that alteration in the IACUC protocol itself).

### **Table of Contents**

I.	Procedure Summary & Goal .....	1
II.	Personal Protective Equipment & Hygiene .....	1
III.	Supply List.....	1
IV.	Detailed Procedure .....	1
V.	Variations .....	2
VI.	Potential Adverse Effects, Mitigation, or Treatment.....	3
VII.	References .....	3

Version: 1

Original date: 12/12/17

Version date: 12/12/17

## **I. Procedure Summary and Goal**

Describes procedures for the collection of blood from the heart as a terminal procedure in the rat.

### Considerations

- a. This is a non-survival (terminal) procedure.
- b. This procedure must be performed under deep general anesthesia.
- c. Please refer to the *Guidelines for Injections in Rodents and Rabbits, Virginia Tech Office of the University Veterinarian* for recommended volumes and needles sizes.
- d. Sample volume obtainable – 3-5% of body weight

## **II. Personal Protective Equipment (PPE) and Hygiene**

- a. Ensure appropriate PPE is used to protect technician from accidental exposure to blood and other body fluids, such as:
  - i. Gloves
  - ii. Eye protection
  - iii. Mask
  - iv. Other PPE as required by protocol/facility
- b. Hands should be washed and/or gloves changed between animals.
- c. Promptly dispose of used sharps in the provided leak-proof, puncture resistant sharps container.

## **III. Supply List**

- a. General anesthetic
  - i. Isoflurane – inhaled to effect, usually approximately 3%
  - ii. 70% CO<sub>2</sub> + 30% O<sub>2</sub> gas – inhaled to effect
  - iii. Ketamine (90-120mg/kg) + Xylazine (8-12mg/kg) combination
    - a) Intramuscular, subcutaneous, or intraperitoneal injection
- b. Syringes (3 to 10cc)
- c. Needles (23 gauge; 1 inch)

## **IV. Detailed Procedure**

- a. Frequency
  - i. Blood collection via cardiac puncture is a terminal procedure.
- b. Anesthesia

General anesthesia is required.

## SOP: RAT BLOOD COLLECTION, INTRACARDIAC

### c. Procedure

- i. Deeply anesthetize the animal with the selected anesthetic agent prior to sample collection procedures.
- ii. Place the animal in dorsal recumbency once the animal has reached an appropriate level of anesthesia.
- iii. Attach appropriately sized needle to a syringe and insert bevel up at a 30-40° angle through the diaphragm, with syringe parallel to the midline of the animal ([Figure 1](#)).
- iv. Insert needle slightly left of and under the sternum, directed toward the animal's head. The needle can be angled slightly towards the left shoulder.
- v. Retract the plunger slightly to create a vacuum inside the syringe and gently advance needle until blood flash appears in needle hub.
- vi. Immobilize the needle and continue to aspirate until a sufficient amount of blood has been collected ([Figure 2](#)).
- vii. Euthanize the animal immediately upon completion of blood collection.
- viii. Dispose of needle in approved sharps container.

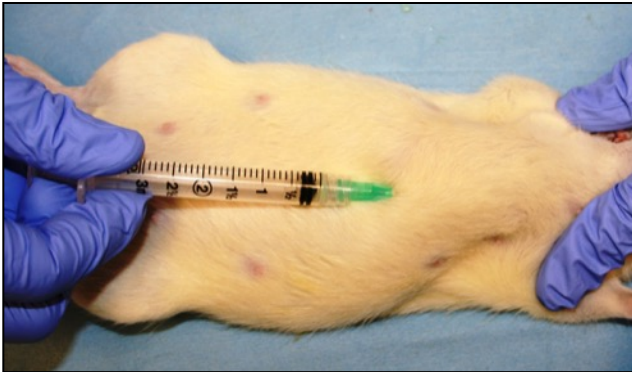


Figure 1. Line Syringe Up with Midline and Insert Needle Medially Toward the Heart

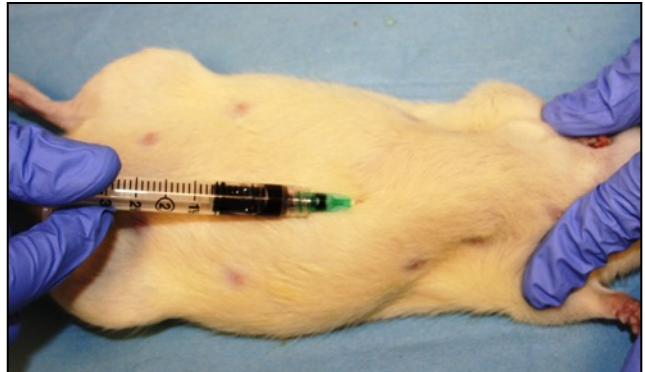


Figure 2. Aspirate Gently for Blood Collection

### V. Variations

- a. Left lateral approach
  1. Place the animal in right lateral recumbency
  2. Palpate the heart on the left lateral thoracic wall
    - i. At approximately the point of flexed elbows, between ribs 5 and 6
  3. Insert needle slowly, perpendicular to the body
- b. Open approach
  1. Place animal in dorsal recumbency
  2. Wet skin with 70% alcohol

## SOP: RAT BLOOD COLLECTION, INTRACARDIAC

3. Make a V-shaped cut through the skin and abdominal wall about 1 cm caudal to the last rib
  4. Move abdominal organs aside
  5. Insert the needle through the diaphragm and into the vena cava or heart
- c. If blood stops flowing, rotate the needle or move it very slightly in or out.

### VI. **Potential Adverse Events, Mitigation, or Treatment**

- a. Distress due to restraint or blood loss
  1. Perform secondary method of euthanasia
  2. Place back in gas anesthetic, use face mask for continuous delivery of gas anesthetic

### VII. **References**

American Association of Laboratory Animal Science. *Laboratory Animal Technician Training Manual*. (Memphis, TN: Drumwright and Co, 2007)

Charles River SOP 2577-2 - *Blood Collection Methods for Use in Studies*

Charles River Insourcing Solutions. *Bi methodology of the Laboratory Rat*

National Institutes of Health Animal Research Advisory Committee. *Guidelines for Survival Bleeding in Mice & Rats*. <http://oacu.od.nih.gov/ARAC/survival.pdf>

Sharp, P.E. *The Laboratory Rat*. (Boca Raton, FL: CRC Press LLC, 1998)